



International Board of Lactation Consultant Examiners® (IBLCE®)

**International Board Certified Lactation Consultant® (IBCLC®) Examination  
April 2019 Administration  
Test Analysis Report Summary**

This document is a summary of the psychometric analysis reported to IBLCE in:

*Test Analysis Report: International Board Certified Lactation Consultant® (IBCLC®)  
Certification Examination April 2019 Administration*

prepared by

PSI Services

July 2019

*Note from IBLCE: In July of 2019, PSI Services changed the format of the Test Analysis Report submitted to IBLCE.*

## **Overview**

This Test Analysis Report (TAR) provides a summary of the statistical analysis results for the following International Board of Lactation Consultant Examiners® International Board Certified Lactation Consultant® (IBCLC®) examination:

- April 2019

The analysis reported includes all administrations of the IBCLC examination during the dates of April 1, 2019 through April 10, 2019.

The IBCLC examination consists of 175 scored items. The examination was administered in computer-based testing format and examinees were allowed 240 minutes to complete the examination.

## Scale Level Statistics

Scale-level (i.e., exam-level) statistics are summarized here for the examination form previously described. Scale-level statistics are presented (see *Table 1*) for first-time examinee administrations.

**Table 1. Scale-Level Statistics for First-Time Examinee Administrations**

<i>Number of first-time examinees</i>	1069
<i>k</i> <sup>1</sup>	175
<i>Cut</i> <sup>2</sup>	125
<i>Mean</i> <sup>3</sup>	137.37
<i>SD</i> <sup>4</sup>	13.88
<i>KR20</i> <sup>5</sup>	0.88
<i>DC</i> <sup>6</sup>	0.9
<i>SEM</i> <sup>7</sup>	4.88
<i>Pass</i> <sup>8</sup>	83.63

*Note: from PSI Services (2019) Test Analysis Report International Board Certified Lactation Consultant (IBCLC) Certification Examination April 2019 Administration.*

- <sup>1</sup> Number of scored items in the scale (i.e., examination).
- <sup>2</sup> Raw cut score for the examination.
- <sup>3</sup> Mean score achieved by the examinees.
- <sup>4</sup> Standard deviation of scores achieved by the examinees.
- <sup>5</sup> Kuder-Richardson 20 reliability estimate of the examination, a measure of the scale's internal consistency.
- <sup>6</sup> Subkoviak Decision Consistency, an estimate of the consistency of pass-fail decisions.
- <sup>7</sup> Standard error of measurement, the average amount of variation attributed to factors other than ability.
- <sup>8</sup> Percentage of examinees who achieved a passing decision outcome.

---

*Kuder, G. F., & Richardson, M. W. (1937). The theory of the estimation of test reliability. Psychometrika, 2(3).*

*Subkoviak, M.J. (1976). Estimating reliability from a single administration of a criterion-referenced test. Journal of Educational Measurement, 13(4).*

## Scale Level Statistics (continued)

Cut score, mean score achieved by the examinees, and the percentage of examinees who achieved a passing decision outcome are summarized below for the remaining certification statuses as well as for all administrations (see *Table 2*). *Table 3* shows pass/ fail rates by eligibility pathway.

**Table 2. Lapsed, Recertification, Repeat, and All Administrations**

	<i>n</i>	<i>k</i> <sup>1</sup>	<i>Cut</i> <sup>2</sup>	<i>Mean</i> <sup>3</sup>	<i>Pass</i> <sup>4</sup>
<i>Lapsed Administrations</i>	27	175	125	139.33	85.19
<i>Recertification Administrations</i>	324	175	125	145.04	95.37
<i>Repeat Administrations</i>	212	175	125	122.12	47.64
<b><i>All Administrations</i><sup>5</sup></b>	<b>1632</b>	<b>175</b>	<b>125</b>	<b>136.95</b>	<b>81.31</b>

*Note: from PSI Services (2019) Test Analysis Report International Board Certified Lactation Consultant (IBCLC) Certification Examination April 2019 Administration.*

**Table 3. Pass Fail Summary by Eligibility Pathway**

Eligibility Pathway	<i>n</i>	<i>Pass</i> <sup>4</sup>
<b><i>Pathway 1-</i></b> Health professionals and non-health professionals earning clinical hours in an appropriate setting	1187	77.76
<b><i>Pathway 2-</i></b> Accredited Academic Programs	25	80.00
<b><i>Pathway 3-</i></b> Mentorship for clinical hours with an IBCLC	44	86.36

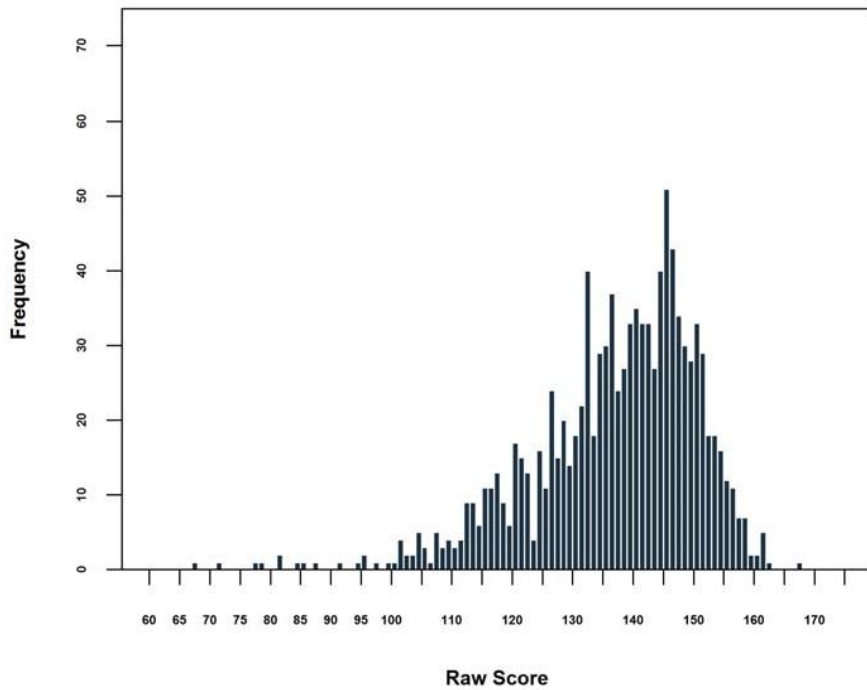
*Note: Adapted from PSI Services (2020) Supplementary Analysis: International Board of Lactation Consultant Examiners (IBLCE) International Board Certified Lactation Consultant (IBCLC) April 2019 & October 2019.*

- <sup>1</sup> Number of scored items in the scale (i.e., examination).
- <sup>2</sup> Raw cut score for the examination.
- <sup>3</sup> Mean score achieved by the examinees.
- <sup>4</sup> Percentage of examinees who achieved a passing decision outcome.
- <sup>5</sup> Inclusive of First-Time Examinee Administrations presented in *Table 1*.

## Score Distribution

The score distribution is summarized here for the examination previously described. The score distribution displays the frequency of scores achieved. The horizontal axis represents the total score and the vertical axis represents the number of examinees who achieved that total score. Score distribution is presented for first-time examinee administrations (see *Figure 1*).

**Figure 1. Distribution of Raw Scores for First Time Candidates**



*Note: from PSI Services (2019) Test Analysis Report International Board Certified Lactation Consultant (IBCLC) Certification Examination April 2019 Administration.*

## Subscale-Level Statistics

Subscale-level (i.e., domain-level) statistics are summarized here for the examination previously described. Subscale-level statistics are presented for all (combined) administrations.

**Table 4. Subscale-Level Statistics for All (Combined) Administrations**

Content Area	# Items	Mean
I. Development and Nutrition	26	20.06
II. Physiology and Endocrinology	24	18.63
III. Pathology	31	23.36
IV. Pharmacology and Toxicology	13	9.69
V. Psychology, Sociology, and Anthropology	21	16.60
VI. Techniques	25	19.88
VII. Clinical Skills	35	28.73

*Note: Adapted from PSI Services (2019) Test Analysis Report International Board Certified Lactation Consultant (IBCLC) Certification Examination April 2019 Administration.*

## References

PSI Services (2019) *Test Analysis Report International Board Certified Lactation Consultant (IBCLC) Certification Examination April 2019 Administration*

PSI Services (2020) *Supplementary Analysis: International Board of Lactation Consultant Examiners (IBLCE) International Board Certified Lactation Consultant (IBCLC) April 2019 & October 2019*