



International Board of Lactation Consultant Examiners® (IBLCE®)

International Board Certified Lactation Consultant® (IBCLC®) Examination
October 2019 Administration
Test Analysis Report Summary

This document is a summary of the psychometric analysis reported to IBLCE in:

*Test Analysis Report: International Board Certified Lactation Consultant® (IBCLC®)
Certification Examination October 2019 Administration*

prepared by

PSI Services
December 2019

Note from IBLCE: In July of 2019, PSI Services changed the format of the Test Analysis Report submitted to IBLCE.

Overview

This Test Analysis Report (TAR) provides a summary of the statistical analysis results for the following International Board of Lactation Consultant Examiners® International Board Certified Lactation Consultant® (IBCLC®) examination:

- October 2019

The analysis reported includes all administrations of this exam during the dates of September 24, 2019 through October 9, 2019.

The IBCLC examination consists of 175 scored items. The examination was administered in computer-based testing format, with one paper and pencil accommodation. Examinees were allowed 240 minutes to complete the examination.

Scale Level Statistics

Scale-level (i.e., exam-level) statistics are summarized here for the examination previously described. Scale-level statistics are presented (see *Table 1*) for first-time examinee administrations.

Table 1. Scale-Level Statistics for First-Time Examinee Administrations

<i>Number of first-time examinees</i>	2,842
<i>k</i> ¹	175
<i>Cut</i> ²	131
<i>Mean</i> ³	135.93
<i>SD</i> ⁴	15.38
<i>KR20</i> ⁵	0.89
<i>DC</i> ⁶	0.87
<i>SEM</i> ⁷	5.02
<i>Pass</i> ⁸	68.40

Note: from PSI Services (2019) Test Analysis Report International Board Certified Lactation Consultant (IBCLC) Certification Examination October 2019 Administration.

¹ Number of scored items in the scale (i.e., examination).

² Raw cut score for the examination.

³ Mean score achieved by the examinees.

⁴ Standard deviation of scores achieved by the examinees.

⁵ Kuder-Richardson 20 reliability estimate of the examination, a measure of the scale's internal consistency.

⁶ Subkoviak Decision Consistency, an estimate of the consistency of pass-fail decisions.

⁷ Standard error of measurement, the average amount of variation attributed to factors other than ability.

⁸ Percentage of examinees who achieved a passing decision outcome.

Kuder, G. F., & Richardson, M. W. (1937). The theory of the estimation of test reliability. Psychometrika, 2(3).

Subkoviak, M.J. (1976). Estimating reliability from a single administration of a criterion-referenced test. Journal of Educational Measurement, 13(4).

Scale Level Statistics (continued)

Cut score, mean score achieved by the examinees, and the percentage of examinees who achieved a passing decision outcome are summarized below for the remaining certification statuses as well as for all administrations (see *Table 2*). *Table 3* shows pass/ fail rates by eligibility pathway.

Table 2. Lapsed, Recertification, Repeat, and All Administrations

	<i>n</i>	<i>k</i> ¹	<i>Cut</i> ²	<i>Mean</i> ³	<i>Pass</i> ⁴
<i>Repeat Administrations</i>	577	175	131	128.01	46.79
<i>Lapsed Administrations</i>	89	175	131	140.83	82.02
<i>Recert -5 years</i>	117	175	131	142.67	88.89
<i>Recert -10 years</i>	862	175	131	145.63	92.92
<i>Recert -15 years</i>	56	175	131	146.02	91.07
<i>Recert -20 years</i>	186	175	131	149.38	96.24
<i>Recert -25 years</i>	25	175	131	147.16	92
<i>Recert -30-35 years</i>	14	175	131	153.29	100
<i>All Administrations</i>⁵	4768	175	131	137.73	72.55

Note: from PSI Services (2019) Test Analysis Report International Board Certified Lactation Consultant (IBCLC) Certification Examination October 2019 Administration.

Table 3. Pass Fail Summary by Eligibility Pathway

Eligibility Pathway	<i>n</i>	<i>Pass</i>⁴
<i>Pathway 1-</i> Health professionals and non-health professionals earning clinical hours in an appropriate setting	3117	63.78
<i>Pathway 2-</i> Accredited Academic Programs	90	87.78
<i>Pathway 3-</i> Mentorship for clinical hours with an IBCLC	155	73.55

Note: Adapted from PSI Services (2020) Supplementary Analysis: International Board of Lactation Consultant Examiners (IBLCE) International Board Certified Lactation Consultant (IBCLC) April 2019 & October 2019.

¹ Number of scored items in the scale (i.e., examination).

² Raw cut score for the examination.

³ Mean score achieved by the examinees.

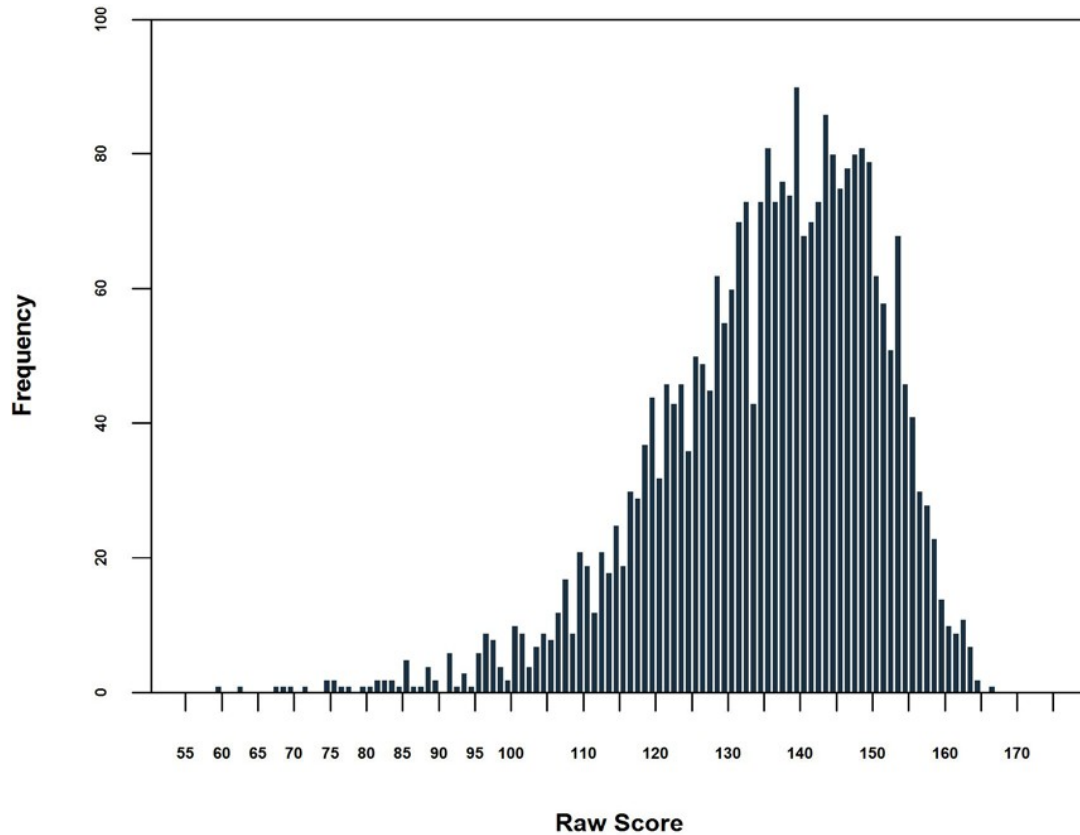
⁴ Percentage of examinees who achieved a passing decision outcome.

⁵ Inclusive of First-Time Examinee Administrations presented in *Table 1*.

Score Distribution

The score distribution is summarized here for the examination previously described. The score distribution displays the frequency of scores achieved. The horizontal axis represents the total score and the vertical axis represents the number of examinees who achieved that total score. Score distribution is presented for first-time examinee administrations (see *Figure 1*).

Figure 1. Distribution of Raw Scores for First Time Candidates



Note: from PSI Services (2019) Test Analysis Report International Board Certified Lactation Consultant (IBCLC) Certification Examination October 2019 Administration.

Subscale-Level Statistics

Subscale-level (i.e., domain-level) statistics are summarized here for the examination previously described. Subscale-level statistics are presented for first-time examinee administrations.

Table 4. Subscale-Level Statistics for First-Time Examinee Administrations

Content Area	# Items	Mean
I. Development and Nutrition	26	20.67
II. Physiology and Endocrinology	24	17.31
III. Pathology	31	24.52
IV. Pharmacology and Toxicology	13	9.14
V. Psychology, Sociology, and Anthropology	21	16.22
VI. Techniques	25	20.75
VII. Clinical Skills	35	27.31

Note: Adapted from PSI Services (2019) Test Analysis Report International Board Certified Lactation Consultant (IBCLC) Certification Examination October 2019 Administration.

References

PSI Services (2019) *Test Analysis Report International Board Certified Lactation Consultant (IBCLC) Certification Examination October 2019 Administration.*

PSI Services (2020) *Supplementary Analysis: International Board of Lactation Consultant Examiners (IBLCE) International Board Certified Lactation Consultant (IBCLC) April 2019 & October 2019.*